

Fair Furniture by Vepa



A fair furniture company

At Vepa, design, development and production are based on circular principles. All our products are 100% made locally in our own factories.



With this inspiration book, we will show you how you too can make a difference in your interior by choosing beautiful designs, sustainable materials and modular solutions that last a lifetime.

Would you like to know more about sustainability? Then please request our social & sustainable development report.

Would you like to see more beautiful images of products or projects? Then please visit our image bank: imagebank.vepa.co.uk or visit vepa.co.uk.

Be inspired!



Table of contents

The most sustainable chair available 7

Made from OR waste 15

Recycling of wood..... 23

Contemporary table series 29

Touchdown and/or team table..... 30

Plastic Whale by Vepa..... 35

PET upcycling of up to 100% post-consumer residual waste flows 43

Hybrid work/conference chair..... 61

Recycling of textile..... 63

Stylish, modular and functional..... 69

Flexible and dynamic working 70

Comfortable jigsaw puzzle 73

Recycling of steel..... 75

Guaranteed circularity 80

Design for disassembly 83

Elegant and grand meetings 86

Working and meeting whilst standing or sitting 91

Sustainable design 92

Distinctive technology 96

Modular all-rounder 103

Focused working..... 110

Touchdown workstations..... 119

Work comfortably at home..... 120

Storage 2.0 125

Scandinavian design..... 130

Smart storage..... 134

Safe and sturdy storage..... 139



The most sustainable chair available

Together with Plantics, we have developed the most sustainable chair ever: Hemp. Infinitely recyclable and biodegradable. The newly developed material is made 100% from biological waste flows and it has been internationally voted 'renewable material of the year 2021'. In 2021, we also won the audience award at the Circular Awards.








+



Legend

- 1. Hemp seed
- 2. Hemp
- 3. Hemp mat
- 4. Plant-based resin
- 5. Pressed, non-processed seat shell
- 6. Seat shell



 **YouTube**
Scan the QR-code and learn how we process hemp into chairs.



In this photo: harvesting hemp



In this photo: chair Hemp Fine, side table Skeef

Hemp

After the industrial hemp is harvested in the summer, the fibrous bark is processed into mats by HempFlax.

These mats are then treated with a biological binding agent developed by Plantics.

We press the mats into shape in our factory in Emmen and then bake the seat shells to create a beautiful end product that only requires a little fine-tuning. The material itself is water-repellent and fire retardant. We finish the shell with linseed oil. Just because we think it's even more beautiful that way!

We can proudly say that we extract 3.13 kg (including return system and biogenic storage) of CO₂ from the atmosphere per Hemp shell.



In this photo: bar stool Hemp High, standing table Timber, benches Units



Made from OR waste

Thousands of kilos of packing material (Bluewrap) are used and thrown away every year. A real waste, because this material is very recyclable! Like in our Blue Finn chair: the plastic back and seat are made from at least 85% recycled Bluewrap and are 100% recyclable after use.





Legend

- 1. Bluewrap as packaging material
- 2. Used Bluewrap
- 3. Regranulate
- 4. Granulate
- 5. Injection-moulded parts



Scan the QR-code and find out how we process QR waste into chairs.



In this photo: chair Blue Finn, table T60



**From low-quality plastic waste
to high-quality chair**

Supplying sterile instruments for operating theatres is top priority for hospitals. These instruments are wrapped in packing material: Bluewrap. Unfortunately, this material is used only once and then thrown away.

What a waste! That is why the different parts of the Blue Finn are designed in such a way that we can easily separate them after use and recycle them completely. If that isn't sustainable, we don't know what is.





Recycling of wood

Not only do we use local, responsible certified FSC®- or PEFC wood, we also incorporate our own residual material in new products. Larger pieces of residual material are the perfect basis for the frames of our Units train benches and Poufs. Leftover residual material is returned to the supplier.





The many advantages of wood

The advantage of wood compared to other raw materials such as steel and plastic is the close proximity to the production site and the relatively low amount of energy required to turn this raw material into components for our products.



In this photo: Unit benches with frames made of our own residual material, table T60



Leftover pieces of wood



Frames for Units benches



Scan the QR code and learn how we process wood waste into new products.



Contemporary table series

Table VPAX is modular expandable and available as a low, medium, or standing version. You can choose from a wide range of tabletop shapes. Square, barrel-shaped, rectangular or do you prefer round? The possibilities are endless.

In this photo: table VPAX, chair Pit

Touchdown and/or team table

Connect is available as a low table and as a standing table. A wooden leg is available to create a warm, homely look. In addition to a rectangular top, you can also choose a square or round top. Fancy something new? Our circular centre refurbishes everything with re-use of existing materials!

In this photo: table Connect with double-sided tilting cable tray, chair Club



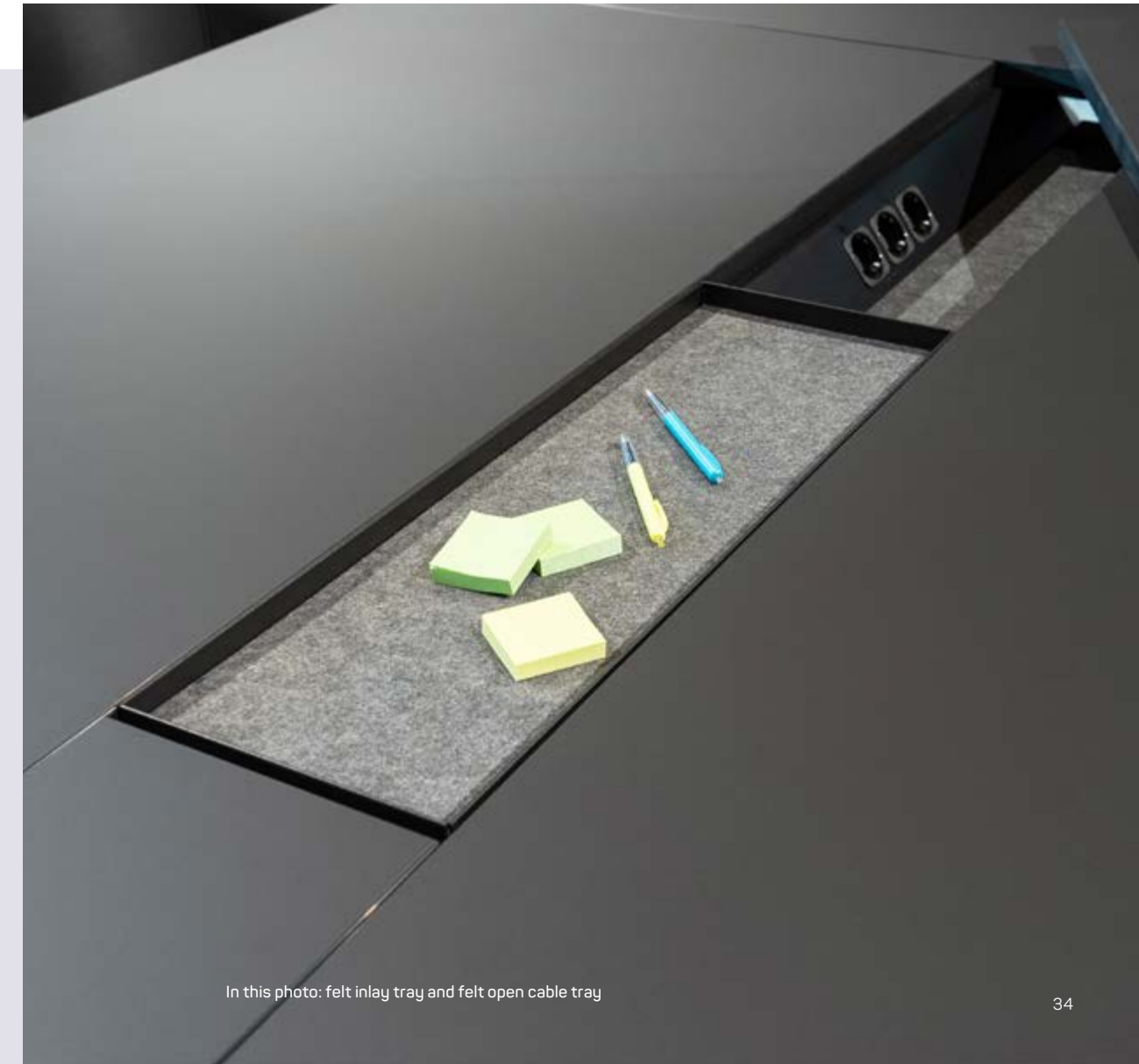


In this photo: optional double-sided tiltable cable tray for covering the open cable tray

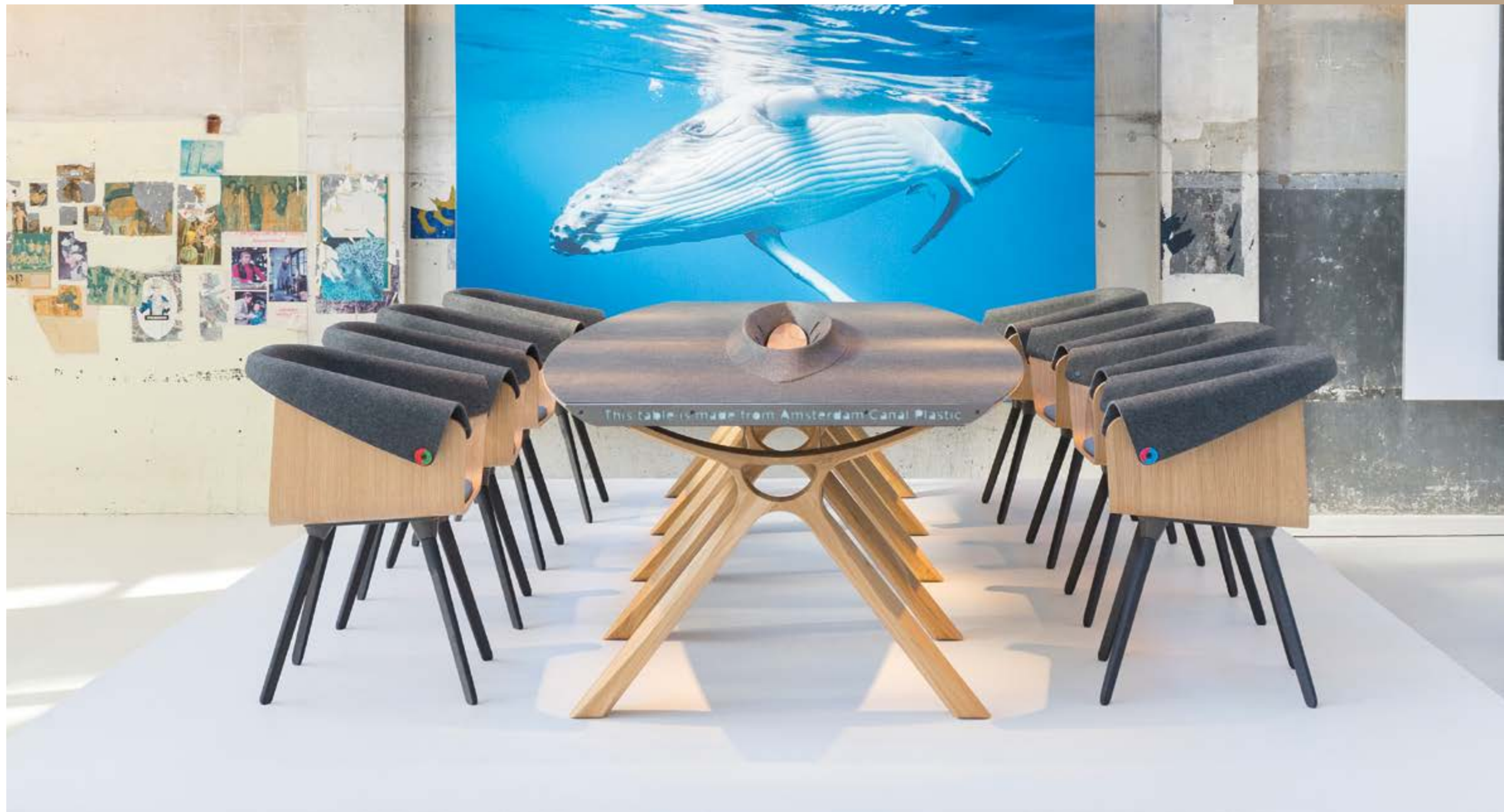
Connect accessoires

The Connect team table can be equipped with various accessories, including an insert tray and cable tray.

An open cable tray with sockets is standard with team tables 75cm high. The cable tray offers the option of beautifully concealing sockets and is accessible from both sides. The insert tray is the ideal place to store pens so they don't roll off the table.



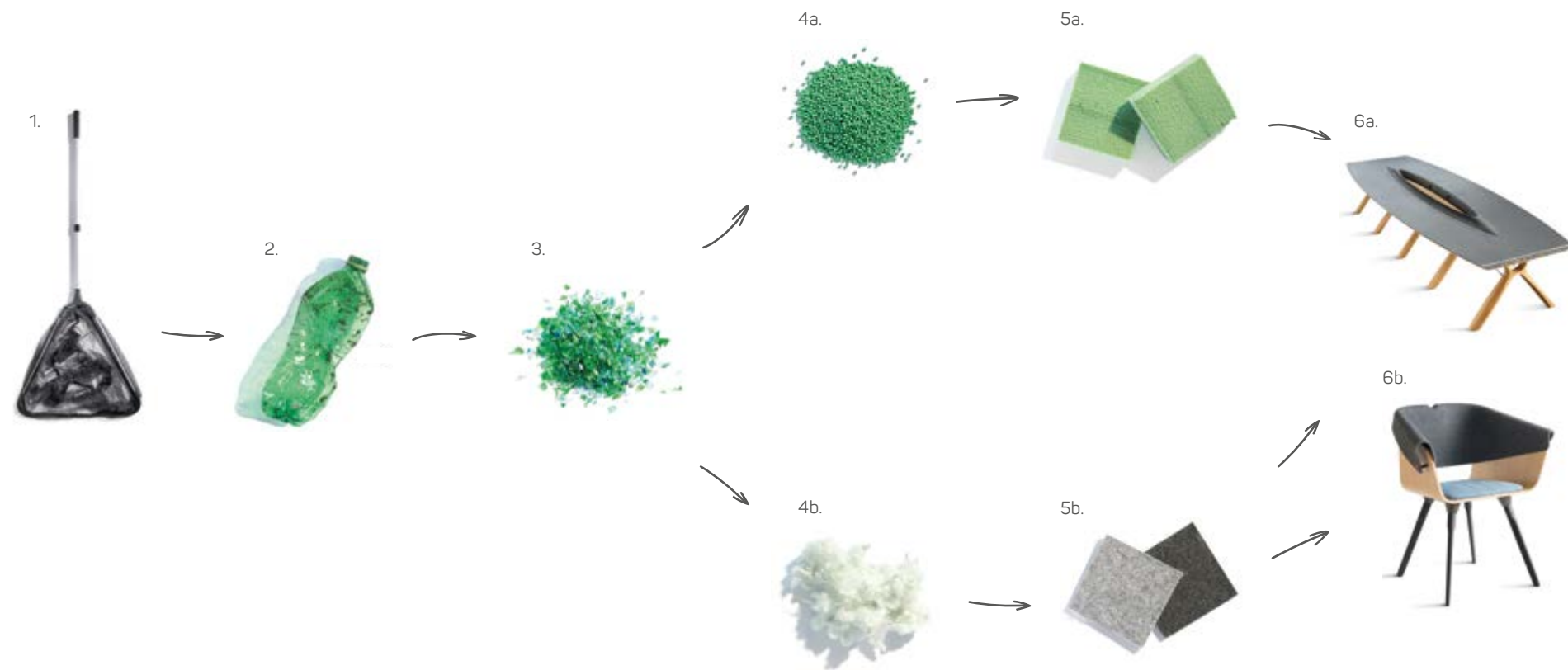
In this photo: felt inlay tray and felt open cable tray



Plastic Whale by Vepa

Stop talking. Let's start doing! In this spirit, Vepa and Plastic Whale have joined forces to take action against the plastic problem. Plastic Whale by Vepa is circular office furniture made from Amsterdam canal plastic.

In this photo: Whale Tail Chair, Whale Boardroom Table



Legend

- 1. Fishing net
- 2. PET bottle
- 3. Flakes

4a. Granulate

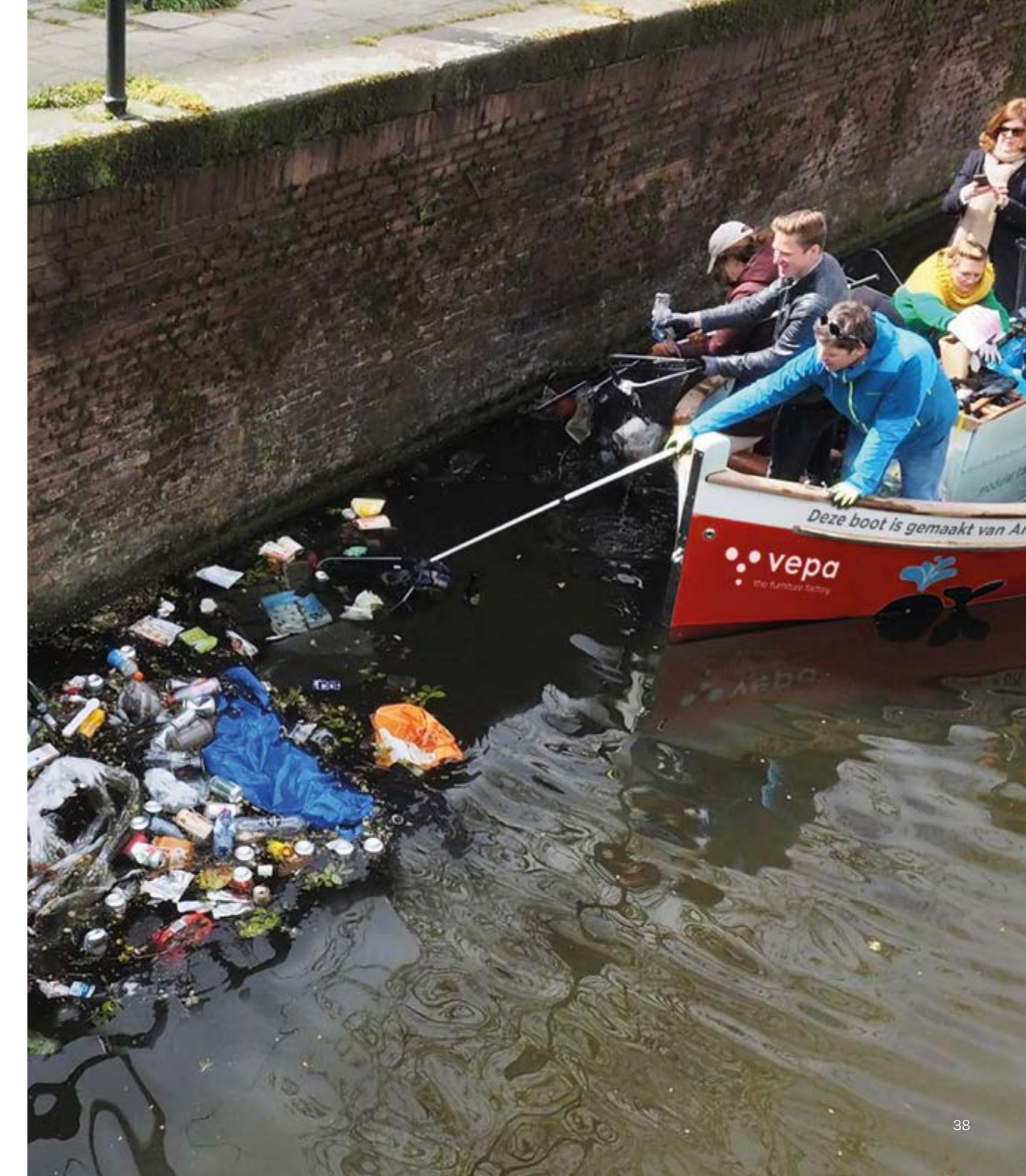
5a. PET foam

6a. Whale Boardroom Table

4b. Fibres

5b. PET felt

6b. Whale Tail Chair



Creating value from waste

What's special about the collection is that the most important resource for the furniture is fished from the canals by Plastic Whale themselves.

The PET bottles are first washed and shredded to make PET felt and PET foam.

Among other things, the PET foam is used for high-quality designer boats which Plastic Whale uses for fishing, and in our Whale Boardroom Table.

In this photo: Whale Tail Chair, Whale Boardroom Table



Inspired by the whale

LAMA Concept designed this collection. Yvonne Laurijsen, co-owner of LAMA concept:

"For whales, the plastic soup is a very serious threat. We

translated characteristic elements of this fascinating animal into the designs. For example, its distinctive skin and impressive skeleton."



Whale Tail Chair



Whale Boardroom Table



Barnacle Lamp



Whale Panel



Barnacle Side Table



In this photo: Whale Tail Chair, Whale Boardroom Table, Whale Panel, Barnacle Lamp



PET upcycling of up to 100% post-consumer residual waste flows

The Felt family is a modern chair made from a unique material: recycled PET bottles. A beautiful, sustainable and comfortable chair collection, suitable for every environment.



reddot winner 2022



Problem or opportunity

We feel it is our duty to make a positive contribution to the future of our planet and fight against the plastic problem. The purchase of a chair from the Felt range supports Plastic Whale's efforts. Part of the proceeds will go to projects elsewhere in the world that tackle the plastic problem.



In this photo: chair Felt with 'colour' shell, table T60



Recycling of PET-bottles

From bottle to new raw material.

To reuse PET bottles from canals, oceans or landfills, they must first be separated by colour. Then the bottles are cleaned, cut into small shreds (flakes) and subsequently processed into fibres. From these fibres, PET felt mats are made. We use this material as a raw material for our Felt chairs.

In this photo: chair Felt Fine

Unique

The light and dark grey shells are demonstrably made of 100% recycled post-consumer PET felt. This sets us apart from others.





In this photo: bar stool Felt High, chair Felt Fine, chair Felt. all with 'colour' shell

Felt in colour

In addition to light grey and anthracite, the Felt collection is available in eight colours!

Choose from brown beige, pale brown, pale green, azure blue, curry, pastel turquoise, antique pink or pine green to create a stylish and trendy interior.

The colours can be applied to all models in the Felt collection with the exception of Felt Tub.





In this photo: chair Felt Relax, side table Skeef, lounge sofa Moi

Red Dot Design Award

It's not just the seating comfort that is outstanding. Our Felt Relax won the Red Dot Design Award in 2022.

Since 1995, this prize has been awarded to products with an extraordinary design. The jury was particularly enthusiastic about the use and application of eco-friendly materials and the company's commitment to sustainable responsibility.



reddot winner 2022



In this photo: lounge element Felt Tub, side table Skeef



In this photo: bar stool Felt High

Plastic Whale by Vepa Regular Collection

The Felt chairs are part of the Plastic Whale by Vepa Regular Collection.

Part of the proceeds of the entire Felt collection will benefit Plastic Whale so that they can continue working to reduce the plastic soup problem, right here and in the rest of the world.



YouTube
Scan the QR code and find out how we process PET into chairs.



In this photo: chair Felt, table T60, sofa Elements



In this photo: chair Felt Relax, chair Felt, bar stool Felt High, chair Felt Fine, lounge element Felt Tub



Hybrid work/ conference chair

Club is a comfortable chair with a modern and sleek design that would not look out of place in most living rooms.

In this photo: chair Club, Whale Boardroom Table



Recycling of textile

We make conscious choices when selecting our fabrics. Not only where quality is concerned, but certainly also when it comes to sustainability. That is why our standard fabrics are OEKO-TEX- or Ecolabel-certified and/or have standards that prove the sustainability of a product.





We don't throw anything away

In our upholstery shop, all furniture is upholstered as efficiently as possible, but unfortunately production without residual material is impossible. Which is a real waste. That is why all our residual material is collected and reused.

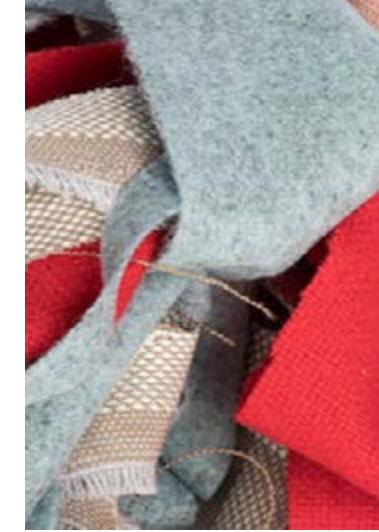


 YouTube

Scan the QR code and learn how we process textile into our products



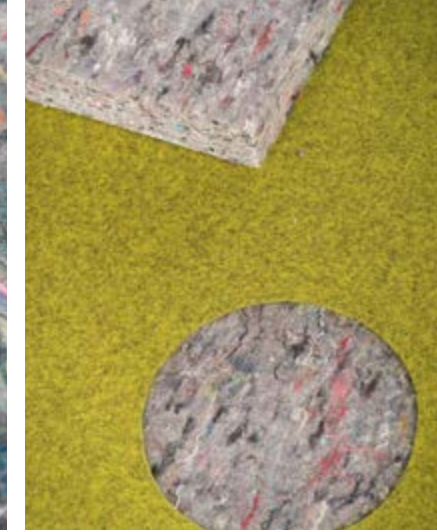
In this photo: workstation Piquic duo with acoustic 'Re-felt' screens made of recycled textile



Residual material



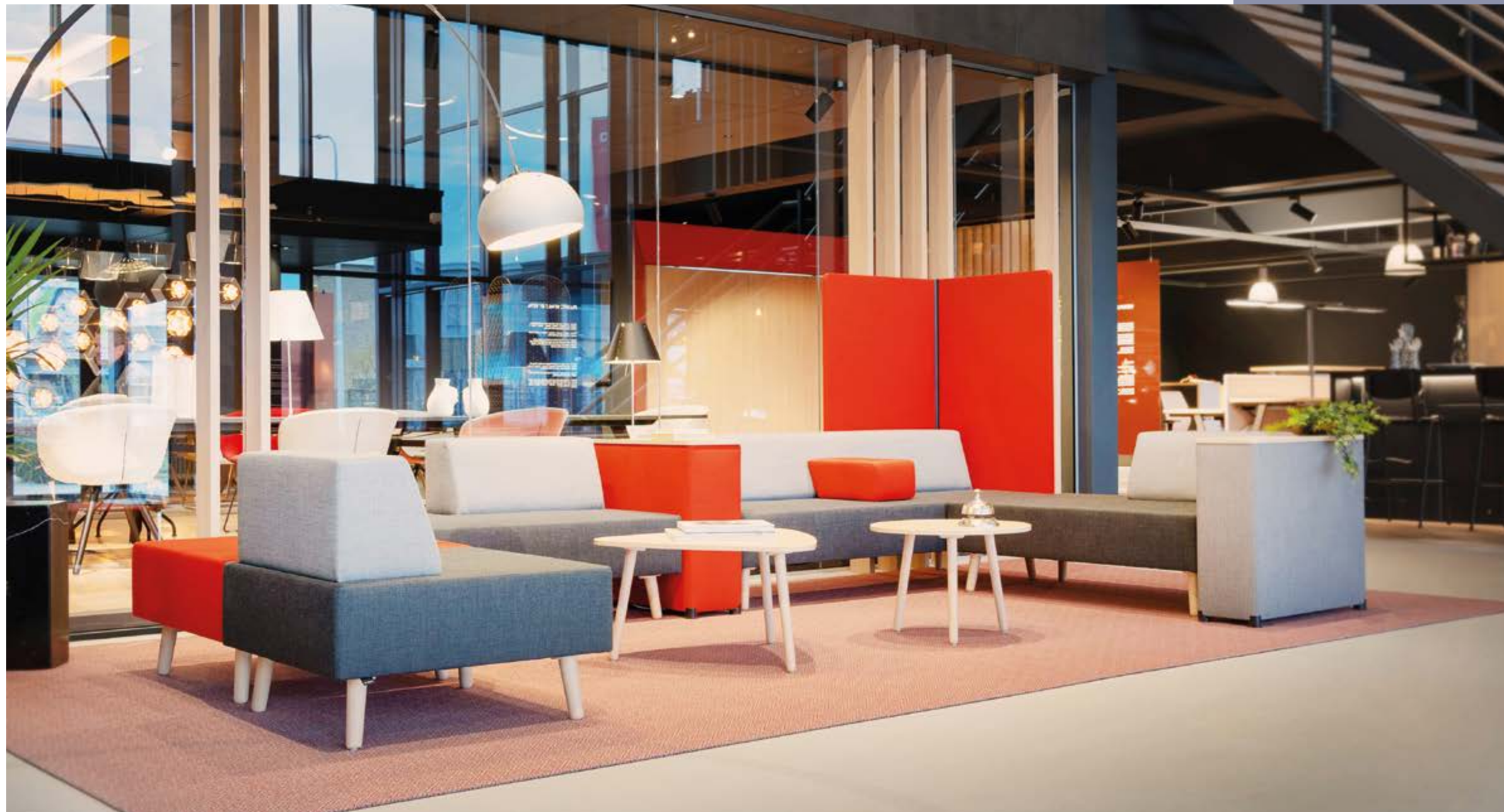
Fibres



Acoustic screen

Re-felt

The remaining textile is cut into pieces and unravelled until there are only fibres left. These fibres are processed into a type of felt. This felt is then pressed into mats: Re-felt. Re-felt is used as acoustic absorption material in our InBetween acoustic screens, for example. Our Re-felt mats have excellent sound absorbing qualities, even better than conventional and less sustainable solutions.



Stylish, modular and functional

The Vepa lounge furniture programme Moi is a complete range of sofas, privacy screens, planters, electrification and lounge elements in a modular design.

In this photo: sofa Moi, side table Skeef

Flexible and dynamic working

Modular Sofa is a contemporary sofa range that can be used to furnish any space to your liking. The range blends practical and technical functionality with style and comfort.

In this photo: Modular Sofa





Comfortable jigsaw puzzle

Jigsaw features 7 different elements in different shapes and heights. Creating playful - yet functional - configurations is easy with these timeless elements.

In this photo: side table Bila, seating elements Jigsaw



Recycling of steel

All our furniture is designed to be fully circular with no waste of residual materials. Table Loft is no exception. The distinctive cast-iron corner joints are made by a local foundry from our own residual material. The chair frame of the Plastic Whale by Vepa chairs is also made from this residual material.





YouTube
Scan the QR code and find
out how we incorporate
steel in our products.

A powerful example

A special machine collects all the bits of steel that are left over from the production process. These bits are pressed into blocks which are then taken to Foundry Rademakers; next door to our factory. The pressed blocks are melted in the foundry and poured into special moulds. After the solidification and processing procedure, the parts are ready for use.

Residual material



Pressed blocks



Corner joint Loft



In this photo: table Loft, chair Club, open cabinet Rack, bar stool Felt High

Guaranteed circularity

Loft is easy to assemble and disassemble and little to no additions are required when, for example, electrification needs to be added. Every single component is made from just one type of material. This also ensures long-term circularity: at the end of its useful life, we simply reuse the material again!

In this photo: standing table Loft, bar stool Felt High





Design for disassembly

We design and develop all our products with this in mind. Timber is a very good example. The eye-catching frame is very rugged. The entire construction is joined using a traditional wedge construction, rather than being welded or screwed.

In this photo: table Timber, chair Felt

Timber

A table made of tough steel.

In addition to the regular version of 75 cm high, Timber is also available as a standing table. The height of the standing table is 110 cm. The standing table is fitted with supports. This provides additional stability and also looks really cool!

In this photo: standing table Timber, bar stool 400



Elegant and grand meetings

Table Onix is suitable for a wide variety of applications, such as meeting and class environments, but also company restaurants. The use of contoured modesty panels in a theatre arrangement creates a splendid configuration for larger formal meeting rooms.

In this photo: table Onix, chair Fado





In this photo: table Onix, chair Fado

Onix

Table Onix is an elegant appearance thanks to the sleek legs.



In this photo: table Onix with milled facet edges

This elegance is emphasized even more in the version with milled facet edges.



Working and meeting whilst standing or sitting

LIFT is a table that can move with people, has a dynamic feel and therefore invites to consult and work. The visible leg construction continues into the worktop and shapes the unique look of the table.

In this photo: table LIFT, Pouf

Sustainable design

Well-designed and distinctive products last longer and retain their value. Sustainability is not limited to the materials but is also about durability.

In this photo: Ypsilon work stations with "dip-dye" frame





Ypsilon

Ypsilon incorporates all functions in a beautiful design. The acoustic screen houses the sit/stand adjustment, the desktop suspension and the spacious cable duct.

The use of beautiful materials and special colour combinations is what makes Ypsilon an exclusive workstation for the office professional.

Ypsilon not only fits perfectly in exclusive environments, but also in modern, natural and trendy offices. The choice of materials for desktop, wall and frame is virtually unlimited. The application of a “dip-dye” frame adds a distinctive, finishing touch.

Ypsilon is designed by the renowned FOKLAB company and constructed by our own R&D team.

In this photo: Ypsilon duo work stations

Distinctive technology

The ParQ and Piquiq desk systems are technical tours de force. A patented secondary adjustment in the desktop frame allows the desktop to rise, but it does not move towards or away from you as you would expect due to the sloping leg frames. The result is a very exceptional desk.

In this photo: ParQ 4-seater workstations with acoustic 'Re-felt' screens made of recycled textile, chair Felt with wooden 4-legged frame, sliding door cabinet KSM-store





ParQ and Piquiq

A contemporary piece of furniture with a distinctive slanted leg shape.

ParQ's leg is positioned extremely far to the back ensuring optimal legroom underneath the desk.

The design of Piquiq speaks for itself. It looks like the familiar picnic tables but it is, in fact, a fully functional workstation.

Both systems are height adjustable by crank (65-89 cm) or electrically (65-130 cm).



Beautiful and functional

The unique design of ParQ and Piquiq meets every specific work requirement, whether individual or team-based. And let's be honest: isn't it a sight for sore eyes?

In this photo: workstations Piquiq duo with acoustic 'Re-felt' screens made of recycled textile





Modular all-rounder

Circular and modular all-rounder: the many faces of Presto! A single platform on which every shape and adjustment has fitted for 20 years now. Never change a winning design!

In this photo: duo workstation Presto RW+, sliding door cabinet KS-store

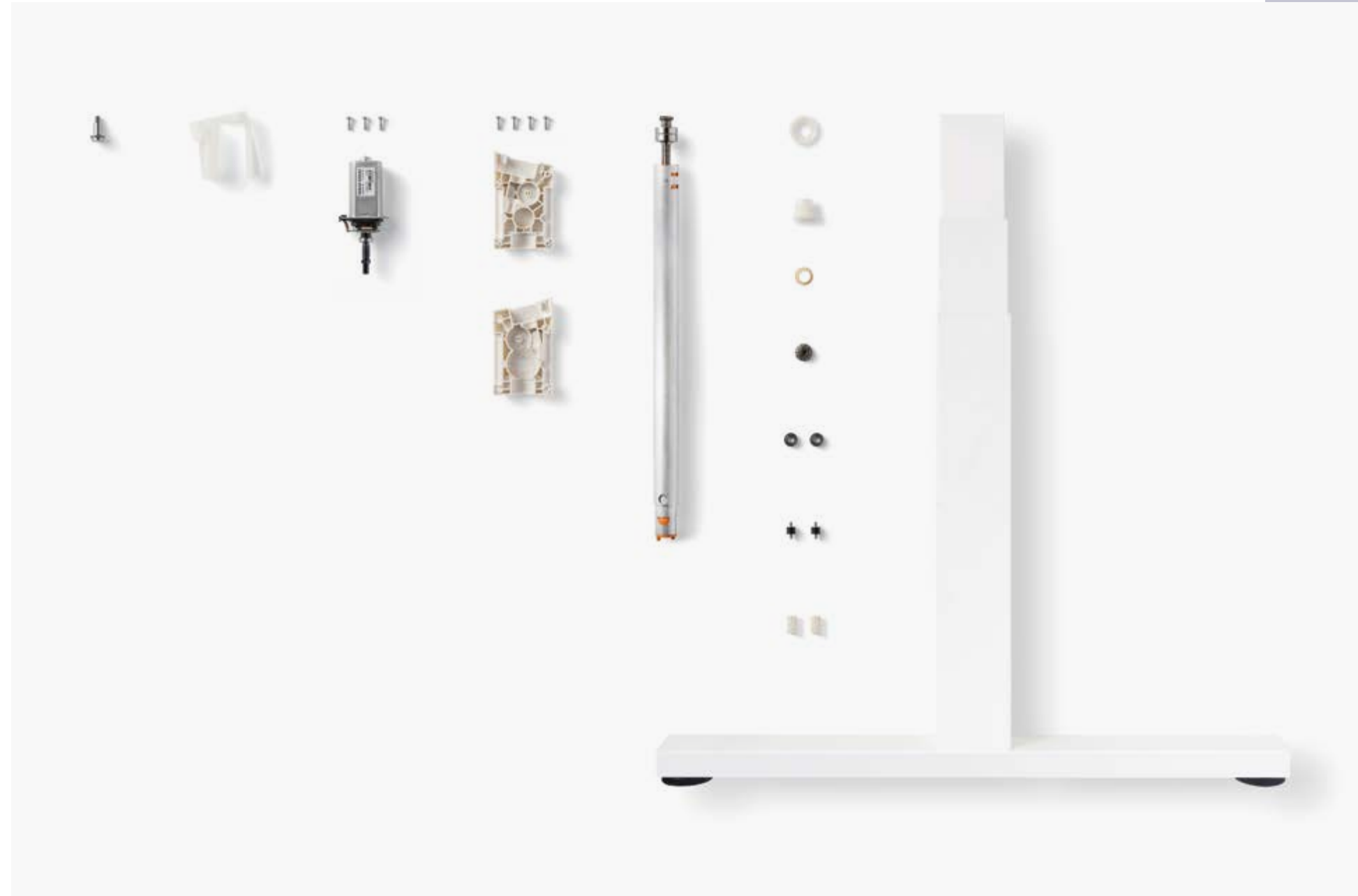


Wide choice

A single system,
all the technology and
many faces.
That is Presto.



In this photo: workstations Presto RT with acoustic 'Re-felt' screens made of recycled textile



Sit/stand technology

The most compact sit/stand technology on the market. Even the motor is in the leg, and therefore no longer underneath the worktop. Which means more space for your legs!



Extensive range of sizes

Presto is available as a single workstation, duo workstation and multiple bench configuration. The height adjustment ranges from fixed height to electrically adjustable sit/stand.

In this photo: workstation Presto RW+, sliding door cabinet KS-store

Focused working

Screens of various heights offer privacy and quiet and allow users to concentrate on their work. A Patch(work) configuration fits perfectly into the modern hybrid office.

In this photo: Patch workstation with acoustic 'Re-felt' screens made of recycled textile, mobile metal pedestal





In this photo: Patch workstations with acoustic 'Re-felt' screens made of recycled textile, mobile metal pedestal

Patch

Selecting different colours for the upholstered screens and wooden walls allows for subtle but also striking accents.



In this photo: Patch workstations with acoustic 'Re-felt' screens made of recycled textile



Patchwork

Private and open at the same time.

Perfect for larger spaces, such as a reception room or auditorium, Patchwork allows you to retreat for a video call, deliberate in peace or focus on the task at hand. A pantry for a cup of coffee or tea is also a must.

You decide to what extent you want to be enclosed by adding screens or a house.

In this photo: Patchwork pantry, Patchwork train seat, Patchwork focus workstation



Patch duo
with low screens



Patchwork duo workplace
with low screens + house



Patchwork focus workplace
with high screens + house



Patchwork pantry
with low screens + house



Patchwork train seat
with low screens + house



Patchwork meeting place
with low screens + house



In this photo: Patchwork train seat, Patchwork duo workstation, Patchwork meeting place, Patchwork pantry



Touchdown workstations

Ready for take-off! Work with flexibility at your Flightdesk. Compact, dynamic and, above all, very distinctive. The ergonomic sit/stand adjustment and the necessary cable management are integrated in the vertical column.

In this photo: Flightdesk

Work comfortably at home

From anonymous cabinet to fully functional sit/stand workstation, that is HomeFit®. The transformation from cabinet into workstation is quick and easy by opening the doors and folding up the worktop.

In this photo: HomeFit®





HomeFit®

HomeFit® is the ultimate professional workstation for the home; it is completely electrically adjustable in height, perfect for the small home, blends in with any interior and it looks good too!



In this photo: HomeFit®



Storage 2.0

Rack is a linkable rack system with a minimalist look. The slender frames, made from thin tubes, create a beautiful frame for presentation and storage. In addition, it offers the opportunity to merge functionality with the aesthetic partition of space.

In this photo: open cabinet Rack, chair Felt Relax, side table Skeef, chair Club

Rack

Inserts such as planters provide more greenery in the office as well as privacy.

Inserts (with or without doors) make this cabinet extra functional and beautiful. A variety of elements make Rack a multifunctional piece of furniture.



In this photo: open cabinet Rack, workstations Piquiq/ParQ



In this photo: open cabinet Rack, duo workstations Piquiq with acoustic 'Re-felt' screens made of recycled textile



In this photo: open cabinet Rack, seating elements Jigsaw, Pouf



Rack with insert
(with fixed shelf)



Rack with insert
and wooden planter



Rack with locker insert and
removable double-sided
scrum board (magnetic
whiteboard + upholstered
notice board) - mobile



Rack with locker insert and
removable double-sided
scrum board (upholstered
notice board + magnetic
whiteboard) - mobile



Rack with locker insert
and magazine display
- mobile

Scandinavian design

A cabinet range that wouldn't look out of place in a lot of living rooms. Inspired by the Scandinavian composition of coloured areas and dimensions. Qube cabinets are designed to give effect to the homely atmosphere of our work environment.

In this photo: cabinet Qube





Qube

Infinite possibilities.

Qube can be fitted with hinged doors or sliding doors. The recessed suspended sliding doors silently move past one another. The storage units are placed on raised frames and the doors create a playful layout.

In this photo: cabinet Qube, bar stool 400

Smart storage

Sliding door cabinets offer integrated solutions for archiving, storing and the layout of an area. The flexible layout options and the high-end acoustic qualities help create an optimal work environment.

In this photo: sliding door cabinet KS-store, duo workstation Presto R with acoustic 'Re-felt' screens made of recycled textile





In this photo: cabinet KSM-store, cabinet KSM-store with XL perforation

KS-store & KSM-store

The high-end acoustic qualities of these sliding door cabinets contribute to an optimal working environment.

The cabinets are finished in wood (KS-store) or metal (KSM-store). The perforated metal doors are fitted with acoustic material and even the back of the cabinets can be fitted with acoustic panels. As an option, the sliding door cabinets can be fitted with a planter.



In this photo: cabinet KSM-store with XL-perforation



Safe and sturdy storage

For many years now, the amount of paper in the office has been decreasing. Documents are stored digitally, permanent workstations become flex spaces, and with all this working from home, even the most hardcore 'binder addict' is getting digitalised. Yet, in this changing office environment, we are actually seeing a huge increase in demand for lockers.

In this photo: locker cabinets L-store (custom made)



In this photo: locker cabinet LM-store

Locker cabinets

Employees need a place where they can safely store their personal belongings.

Our wooden and steel locker cabinets have a modular structure: the locker compartments can be connected and stacked, to create a customised locker system.

For office environments, we often opt for wooden locker solutions. The reason is that wood has a warmer appearance than steel.

In areas with less supervision, such as changing rooms or schools, steel lockers are often used. "What's not on, can't come off," and therefore these lockers lack all unnecessary elements.



In this photo: locker cabinet LM-store (custom made)



Want to see how it is made?
Please contact us for a guided tour!

Showroom Hoogeveen

Industrieweg 31
7903 AH Hoogeveen
the Netherlands

Showroom Telford

Unit A, Halesfield 14
TF7 4QR Telford
United Kingdom

Showroom Glasgow

124 St Vincent Street,
Glasgow G2 5HF,
United Kingdom

Showroom Frankfurt

Westhafenplatz 1
60327 Frankfurt am Main
Germany

Showroom Manchester

Material Source Studio
1 Federation Street Manchester
United Kingdom

**Fair Furniture Academy,
GreenField & Circular
Centre**

James Cookstraat 20
7825 AN Emmen
the Netherlands

Showroom Brussels

Aarlenstraat 20
1050 Brussels
Belgium

Showroom London

45 Gee St,
London EC1V 3RS,
United Kingdom

info@vepa.co.uk
+44 1952 585828

